



EarthCraft Light Commercial

Note: the EarthCraft Light Commercial program's web pages will be up and running soon...

The EarthCraft Light Commercial program is a regional green building certification program in the Southeast for commercial buildings sized 15,000 square feet or less.

Anticipated Program Launch - Summer 2010

Based on the [EarthCraft House](#) residential program – which has certified nearly 10,000 single and multifamily homes in the Southeast – the EarthCraft Light Commercial program offers third-party recognition of sustainable design and construction practices for small-scale commercial buildings. The program has now completed its pilot phase, and will be officially launched this summer.

EarthCraft Light Commercial Pilot Projects: Setting the Standard

The EarthCraft Light Commercial program was developed by [Southface](#) to foster the greening of small scale, or “light,” commercial buildings. Much like the EarthCraft House program, EarthCraft Light Commercial offers an intensive level of support during the design and construction process, focusing on the energy- and water-efficient design strategies specific to smaller scale commercial buildings, as well as prescriptive measures that enhance builder education on sustainable construction practices. This program is particularly well-suited to office buildings, retail showrooms, community centers, mixed-use retail, club houses, corner stores, learning centers and churches.

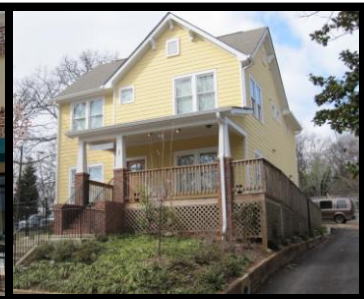
EarthCraft Light Commercial began as a pilot program, with 10 commercial projects from across the Southeast participating. Over two years, each project took part in design reviews, inspections, testing and data collection, which provided valuable information for the final EarthCraft Light Commercial program design. Participants from each pilot project have been instrumental in the research and development process. The following are the most recent EarthCraft Light Commercial-certified pilot projects:



Blaylock Lakes
'Hunt Club'



Architectural Visions, Inc.
Marvin Design Gallery



Muriel Lokey Center
of Emmaus House

Benefits of EarthCraft Certification

- An integrated systems approach to improve building performance
- Environmentally conscious design and construction applications
- Efficient use of natural resources, including water, energy and building materials
- Reduction in demand for utilities, resulting in savings on the cost of building operations
- Improved indoor air quality and comfortable working environment
- Compatibility with all EarthCraft programs – including House, Multifamily, Renovation and Communities – as well as other popular green building programs, such as LEED™

Contact Information

For information about the program, or to receive e-mail updates on the program launch, please contact Denise Grimm, LEED AP, Southface Commercial Green Building Services Project Manager, at dgrimm@southface.org